



CAAC Design and Construction Update

3-16-2023



2022 Projects

New Buildings & Additions

Ralston Valley HS 10 Additional Classrooms EUA - Himmelman



Ralston Valley HS 10 Additional Classrooms EUA - Himmelman



Efficiency Future Ready
Windy Peak OEL
HCM – Bryan

Construction



Permanent Power Scheduled Mid April

Efficiency Future Ready
Windy Peak OEL
HCM – Bryan

Construction



Efficiency Future Ready Mount Evans OEL

Construction

HCM – GH Phipps



Efficiency Future Ready
Mount Evans OEL
HCM – GH Phipps

Construction



DW LED 2022

Ackerman – CMGC McKinstry



Construction

1. Brady
2. Bradford North
3. Bradford South
4. Ute Meadows ES
5. Leawood ES
6. Normandy ES
7. Rooney Ranch ES
8. Creighton MS
9. Moore MS
10. Mandalay MS
11. Deer Creek MS
12. Lawrence
13. Weber ES
14. Meiklejohn
15. West Woods
16. Chatfield HS
17. Dakota Ridge HS

2023 Efficiency Future Ready & DW projects

Efficiency Future Ready Wheat Ridge HS Eidos – GTC

Construction



Efficiency Future Ready Wheat Ridge HS Eidos – GTC

Construction



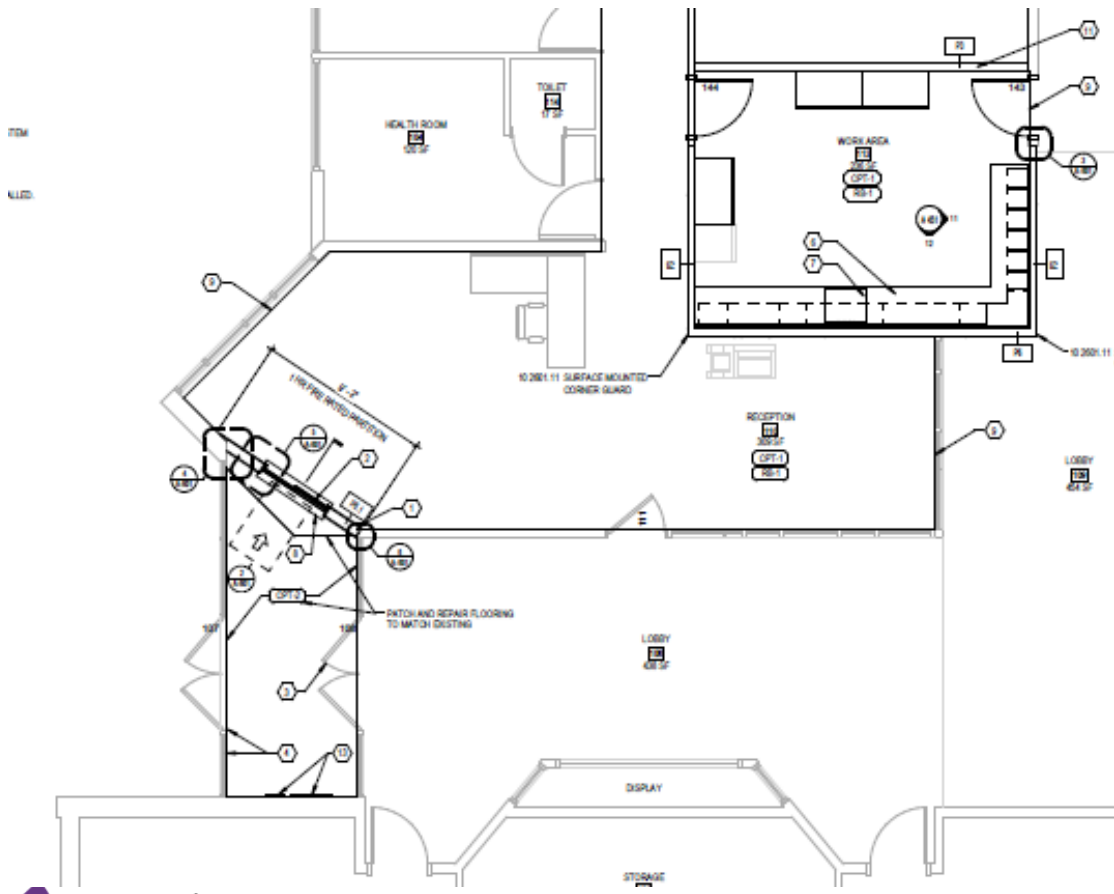
Efficiency Future Ready Wheat Ridge HS Eidos – GTC

Construction



Ute Meadows ES – Efficiency Future Ready MOA – Crossland

Construction



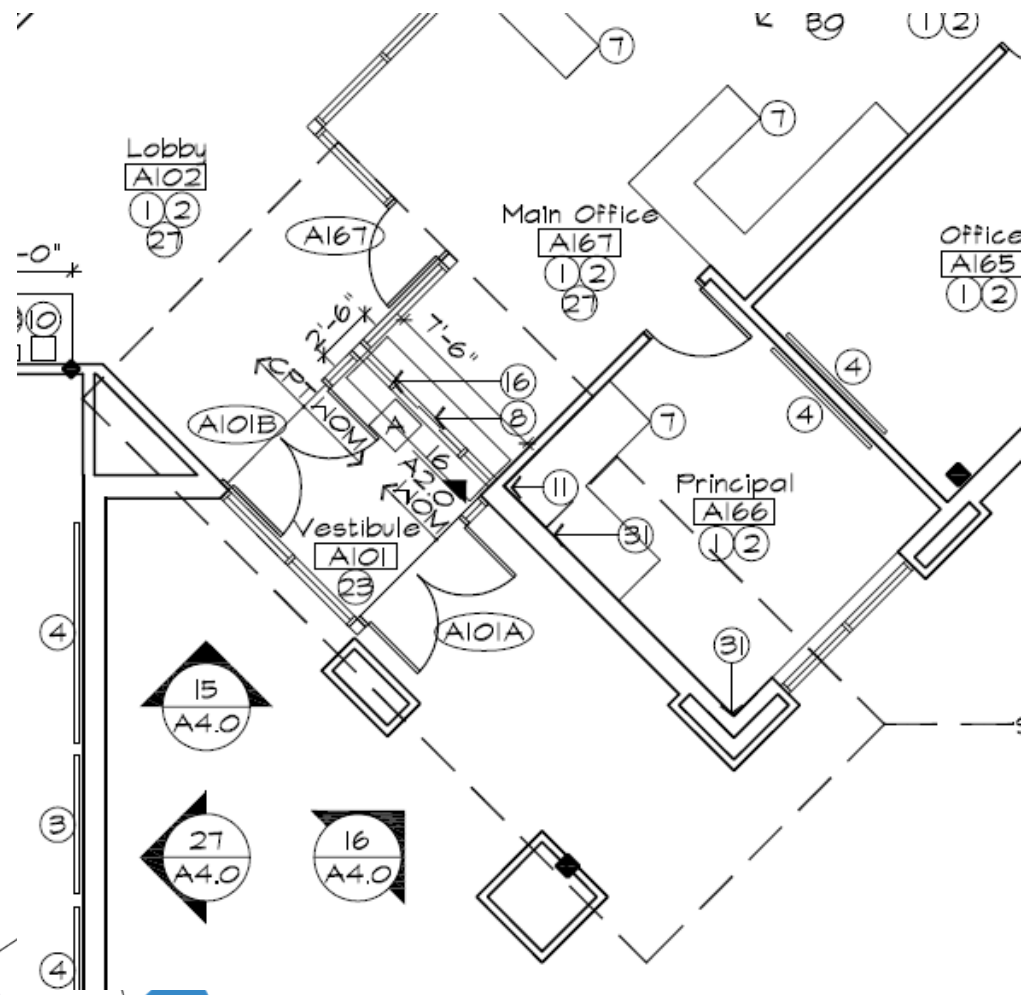
Blue Heron ES – Efficiency Future Ready MOA – Crossland

Construction

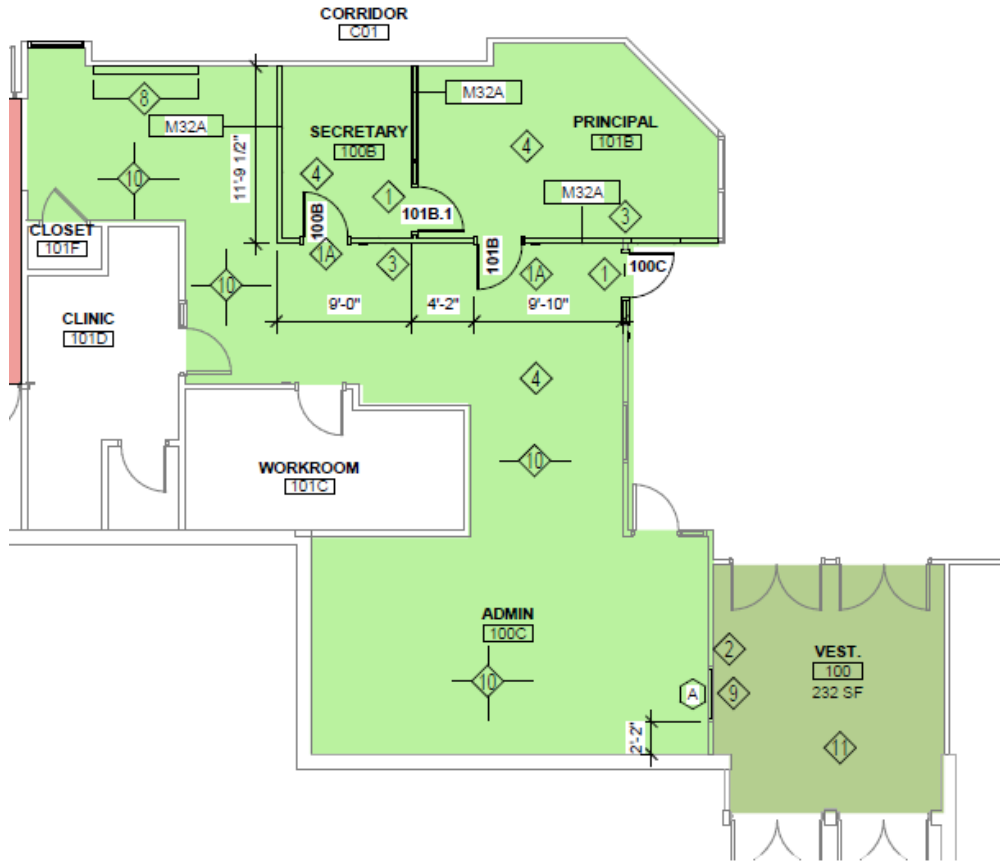


Mortensen ES – Efficiency Future Ready DLH – Crossland

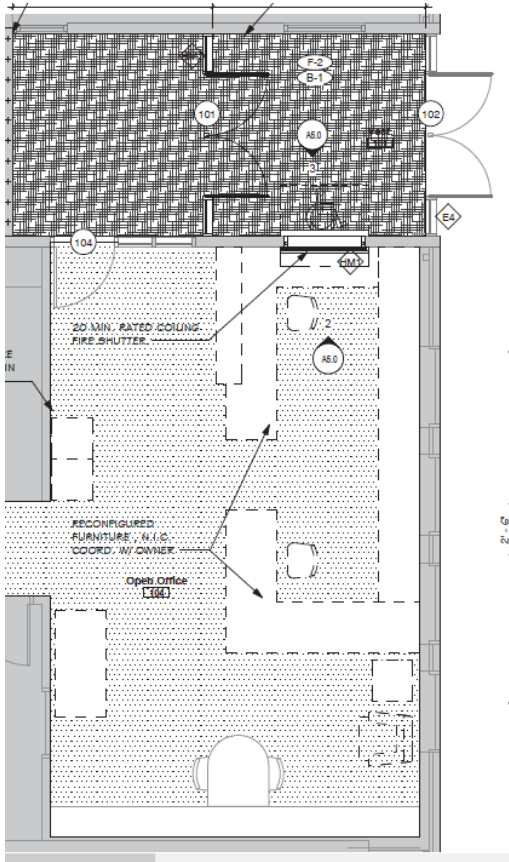
Construction



Ken Caryl MS – Efficiency Future Ready HCM – PG Arnold

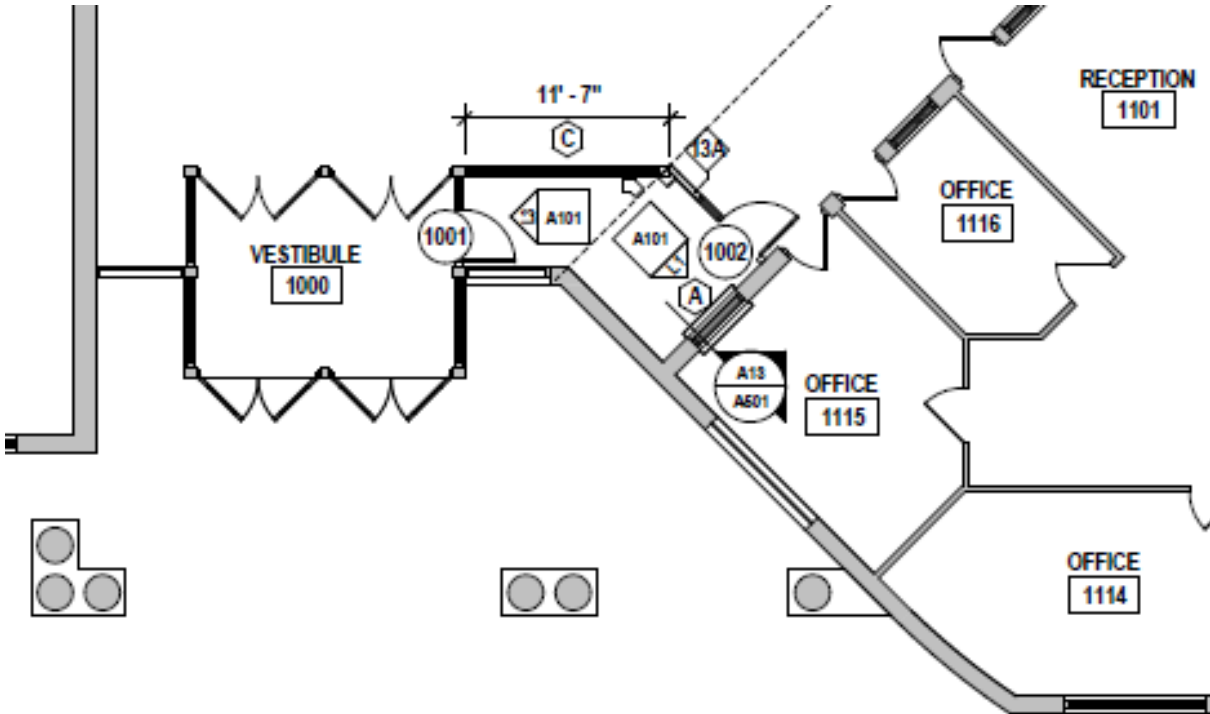


Mt Carbon – Efficiency Future Ready Eidos – Single Track



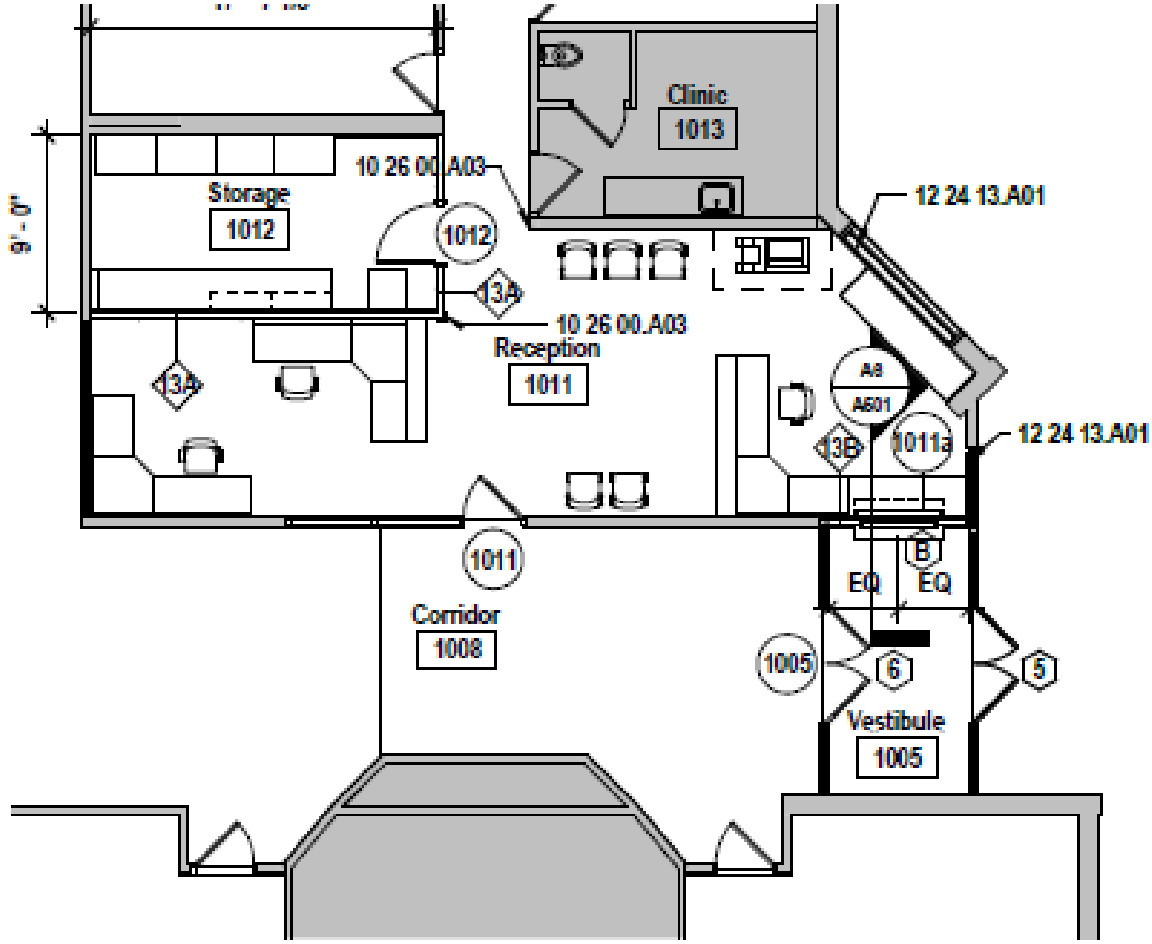
Summit Ridge MS – Efficiency Future Ready H&M – GTC

Construction



Kendallvue ES – Efficiency Future Ready H&M – GTC

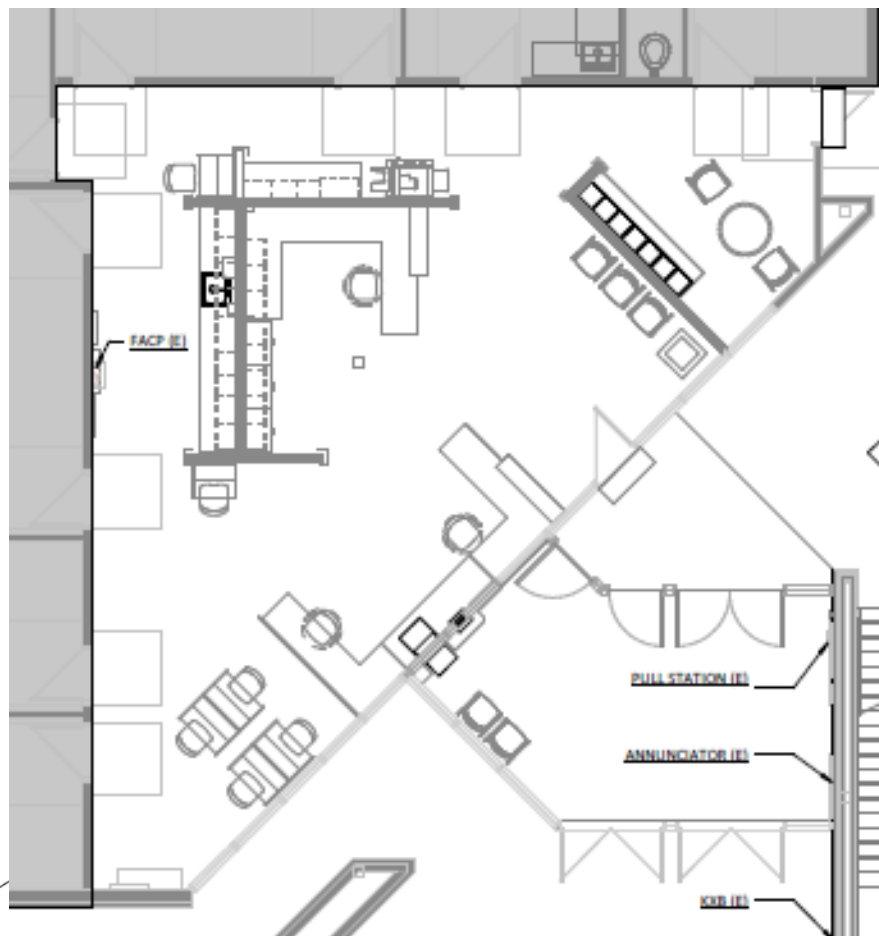
Construction



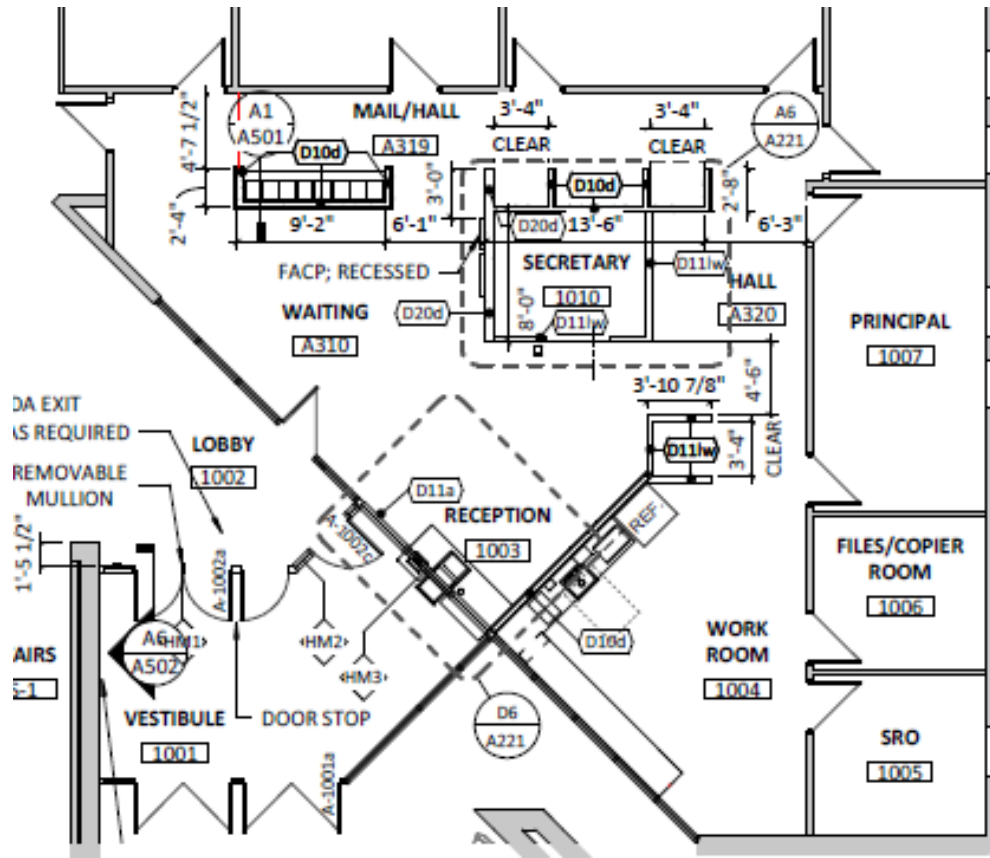
Deer Creek MS

Efficiency Future Ready

RB+B – GTC

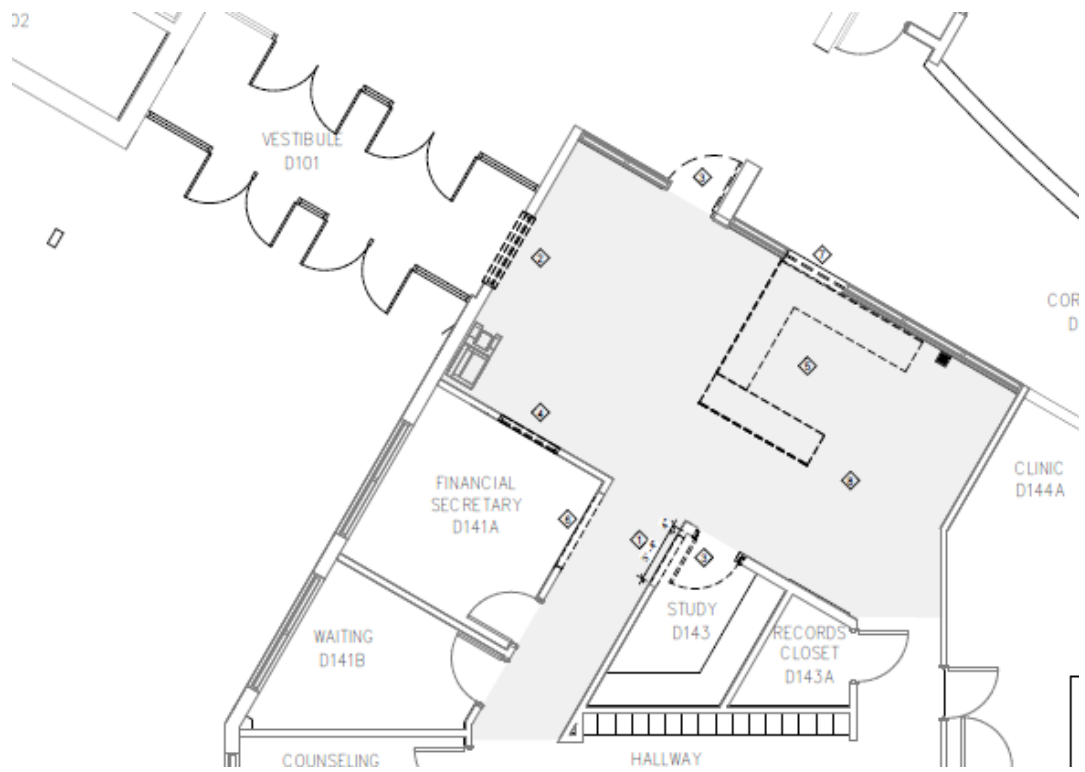


Mandalay MS Efficiency Future Ready RB+B – GTC



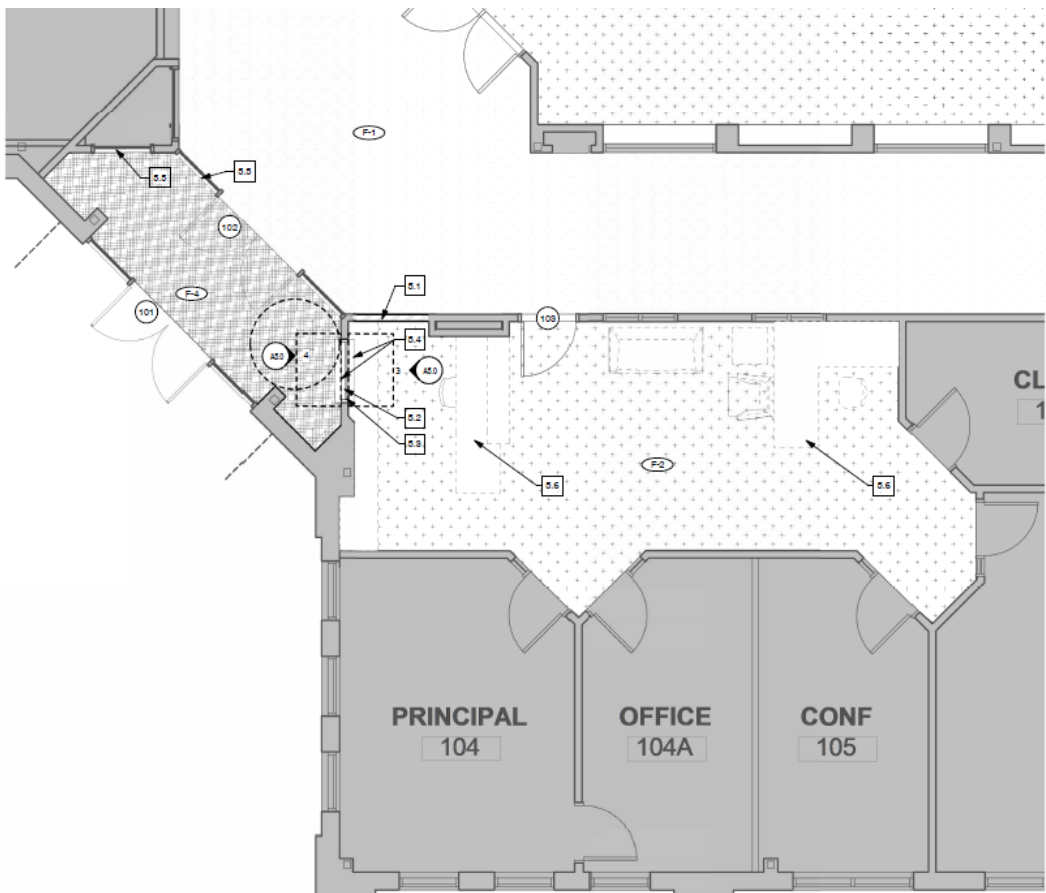
Dunstan MS – Efficiency Future Ready HCM – Single Track

Construction



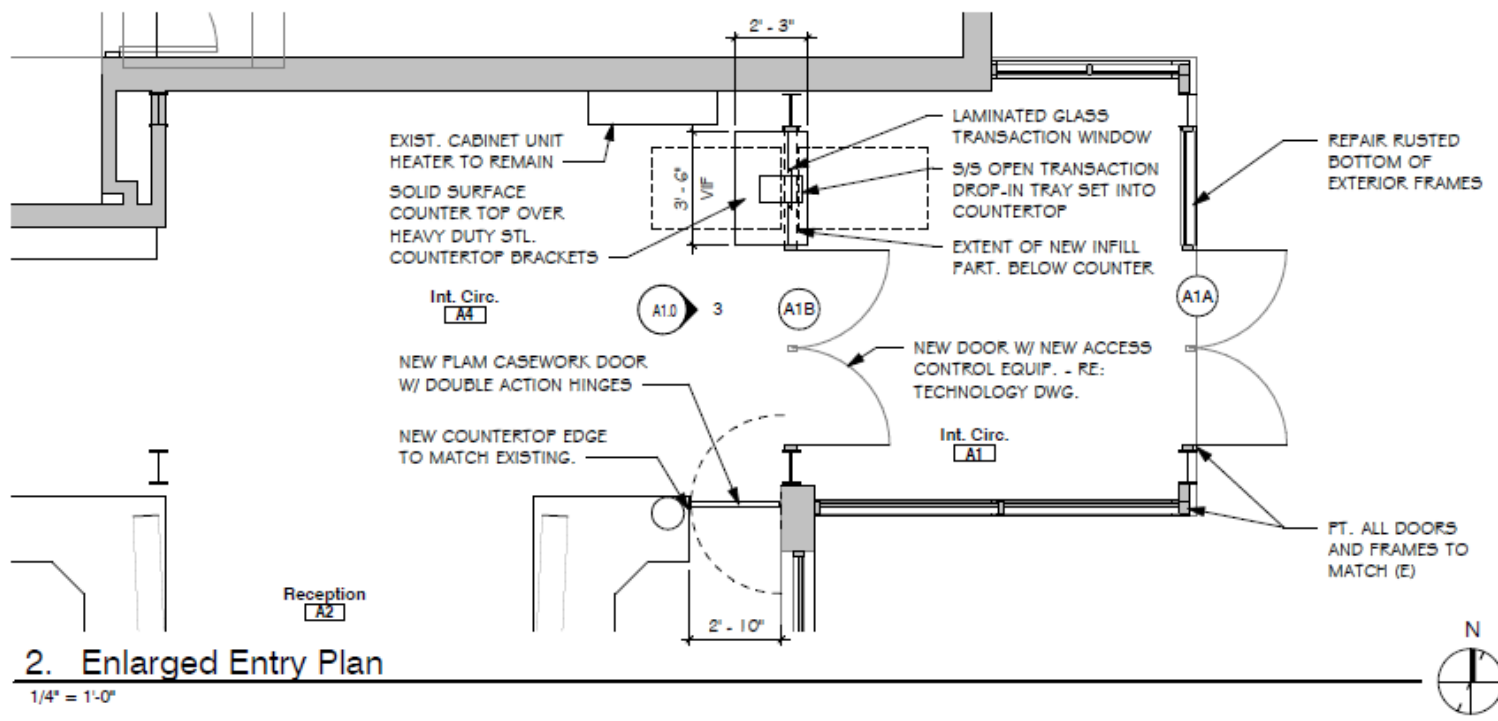
Sobesky Academy – Efficiency Future Ready Eidos – Singletrack

Construction



Pennington ES – Efficiency Future Ready Eidos – Single Track

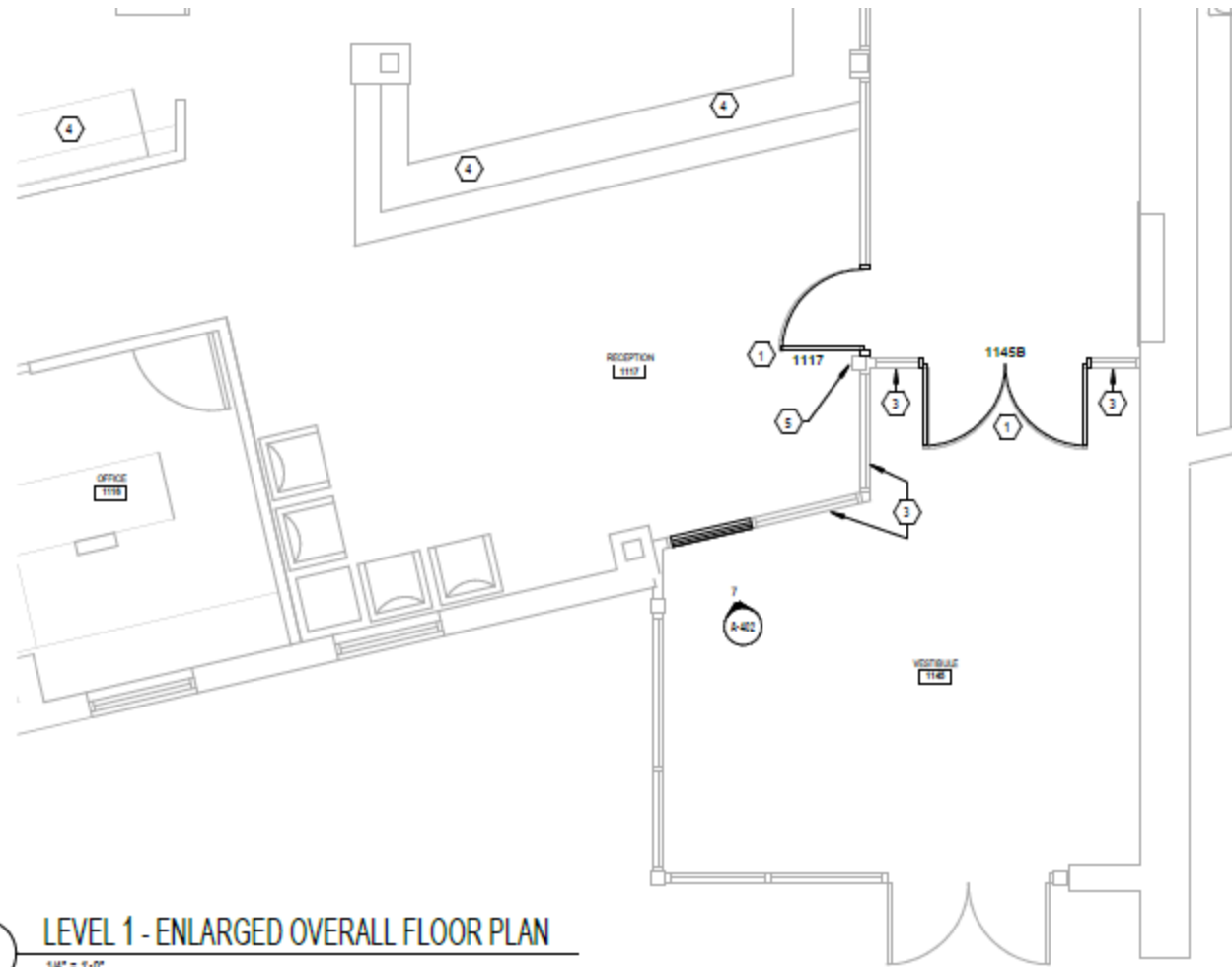
Construction



2. Enlarged Entry Plan

Bear Creek K8 – Efficiency Future Ready MOA – Flintco

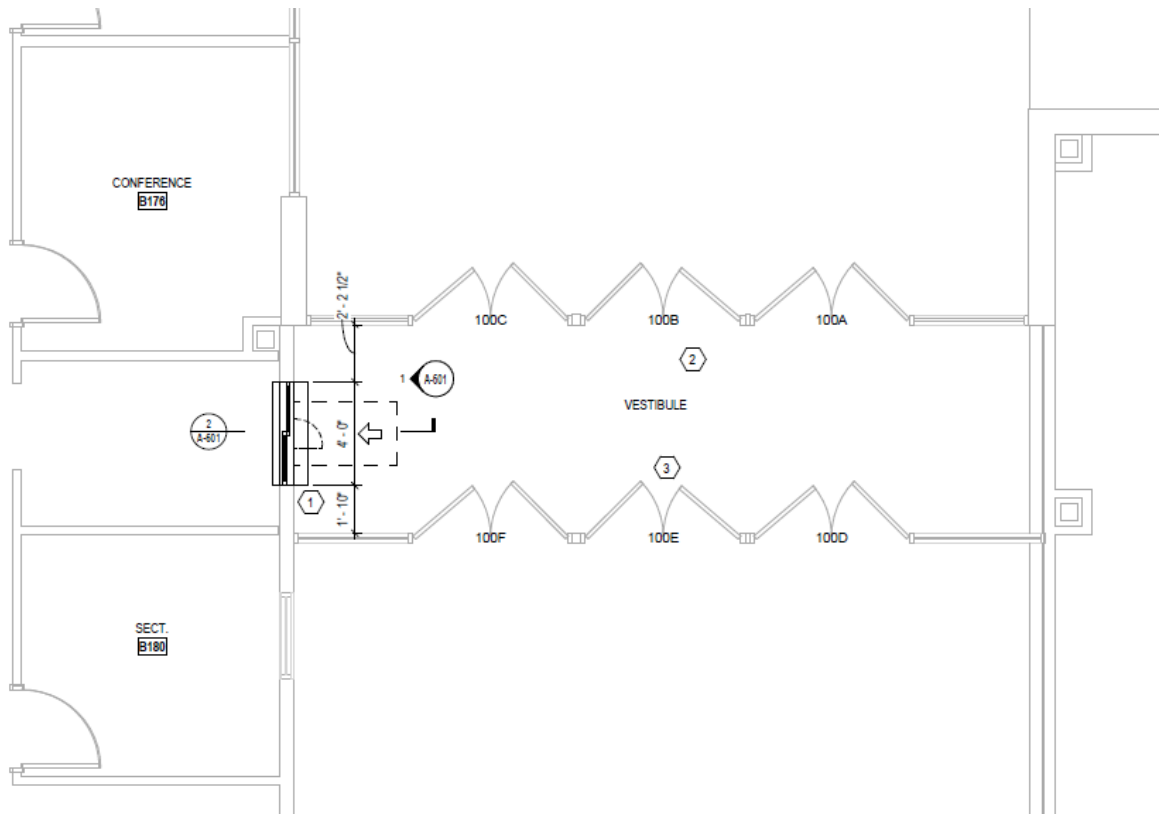
Construction



5 LEVEL 1 - ENLARGED OVERALL FLOOR PLAN
1/4" = 1'-0"

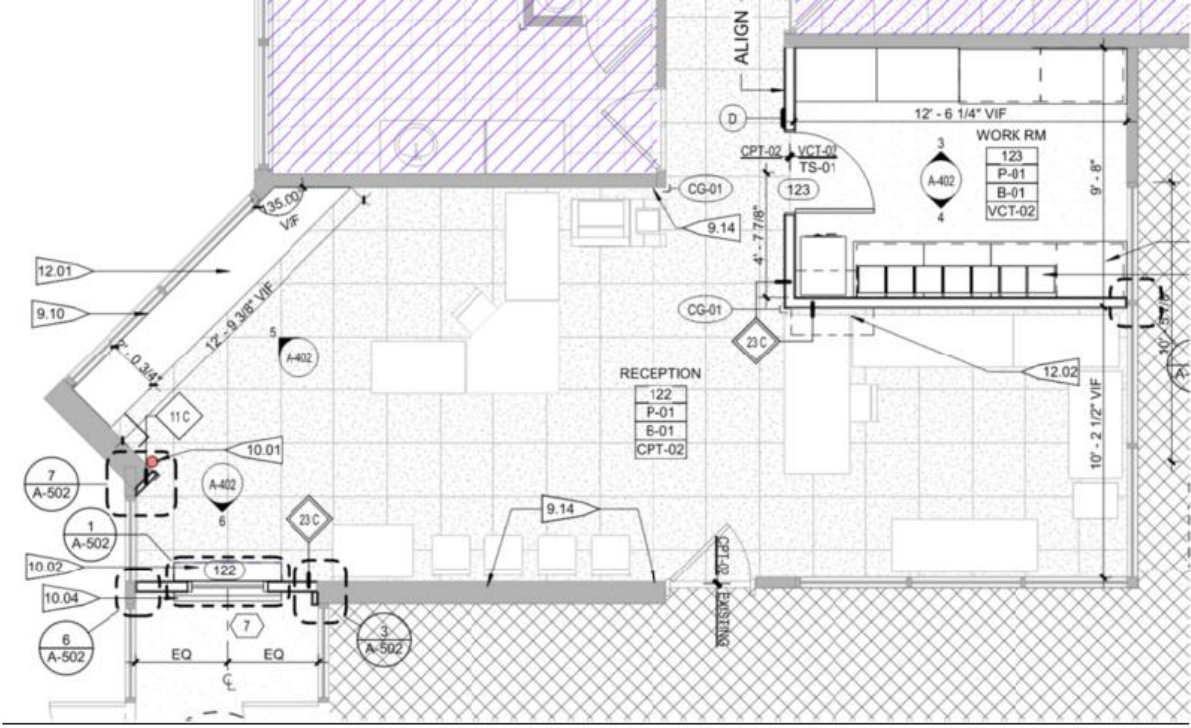
Falcon Bluffs MS – Efficiency Future Ready MOA – Flintco

Construction



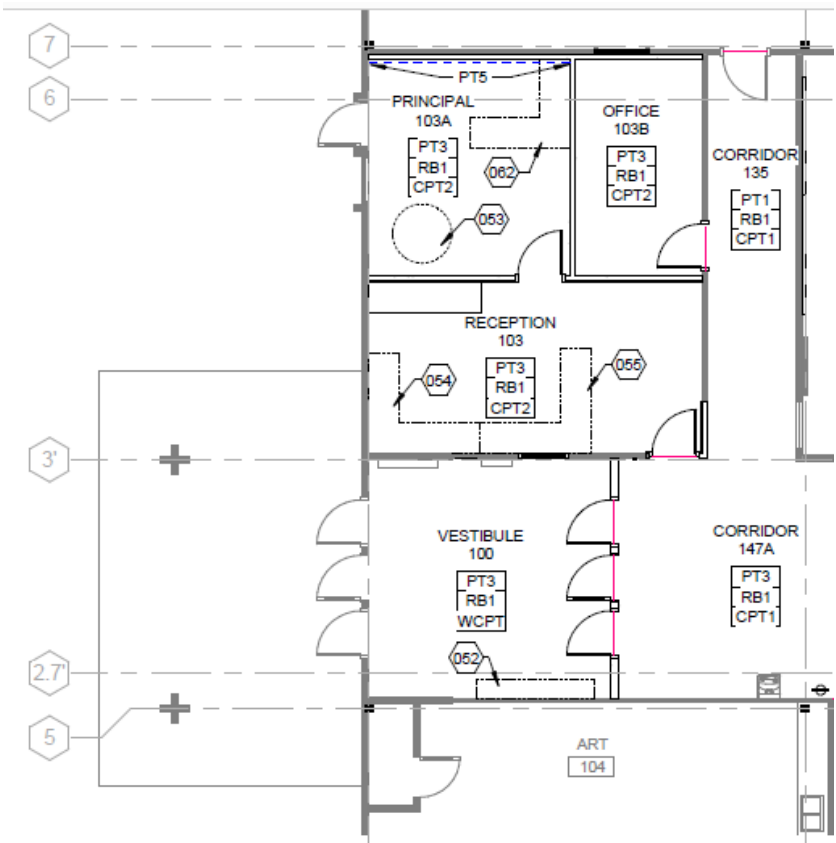
Governors Ranch – Efficiency Future Ready MOA – Flintco

Construction



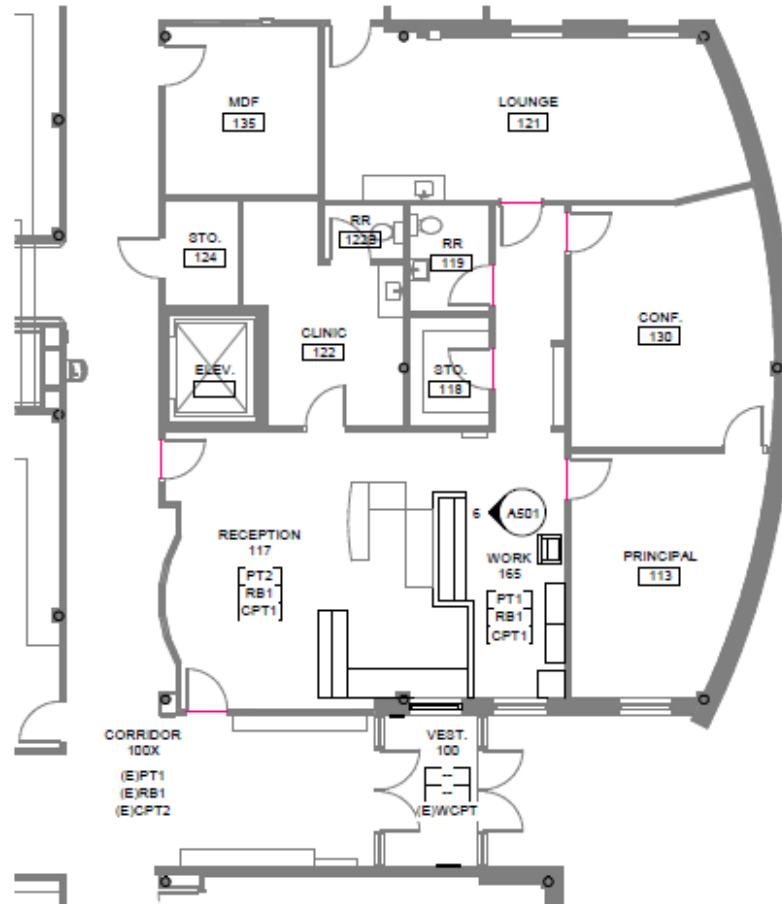
Little ES – Efficiency Future Ready Treanor HL – ADMiller

Construction



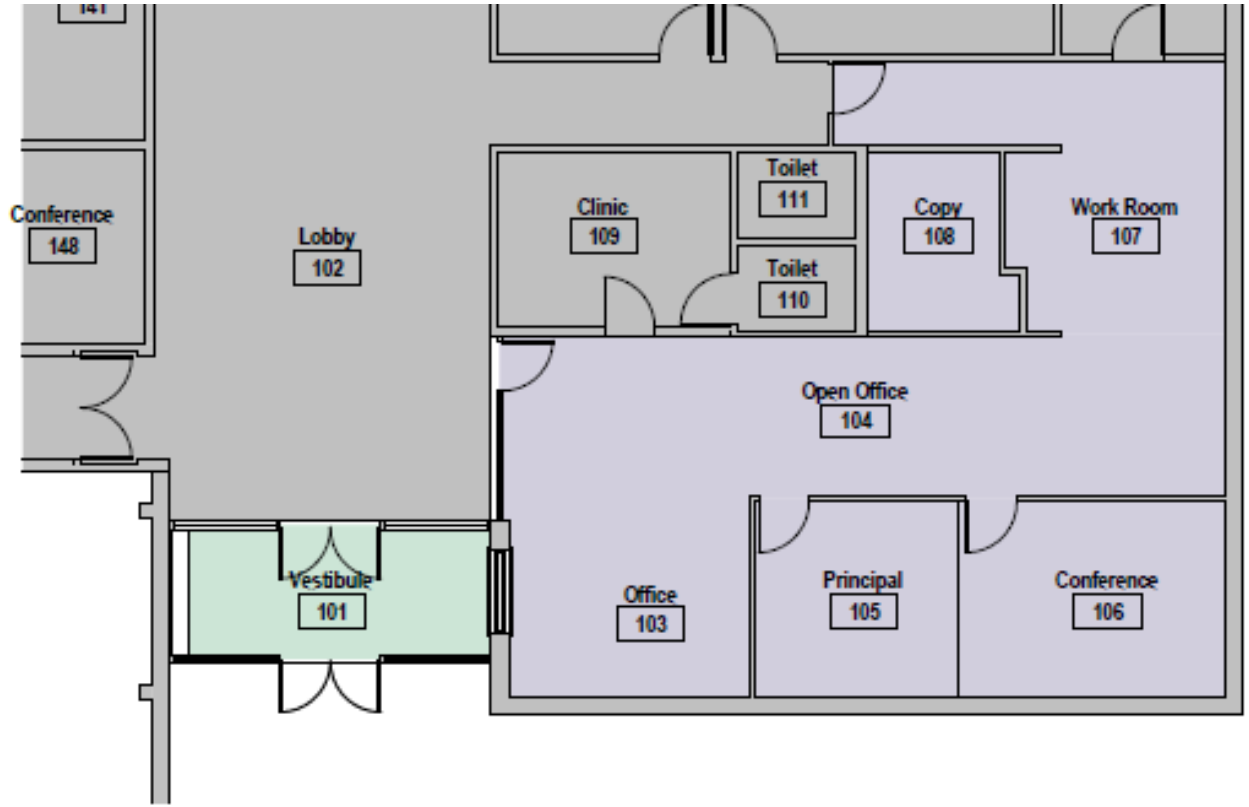
S Lakewood ES – Efficiency Future Ready Treasor HL – ADMiller

Construction



Van Arsdale ES – Efficiency Future Ready H+M – O-A-K

Construction

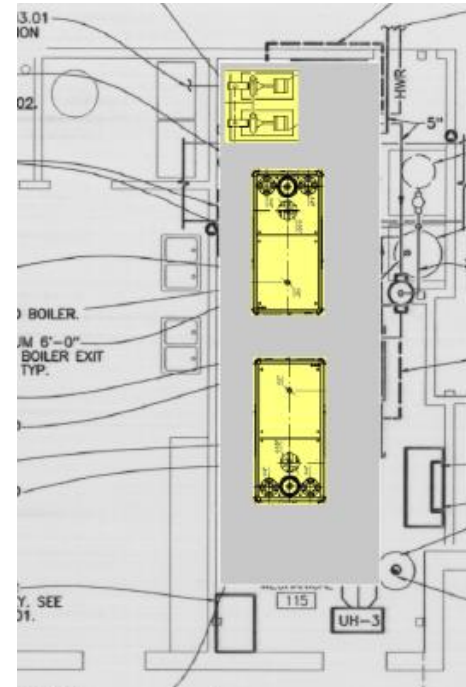
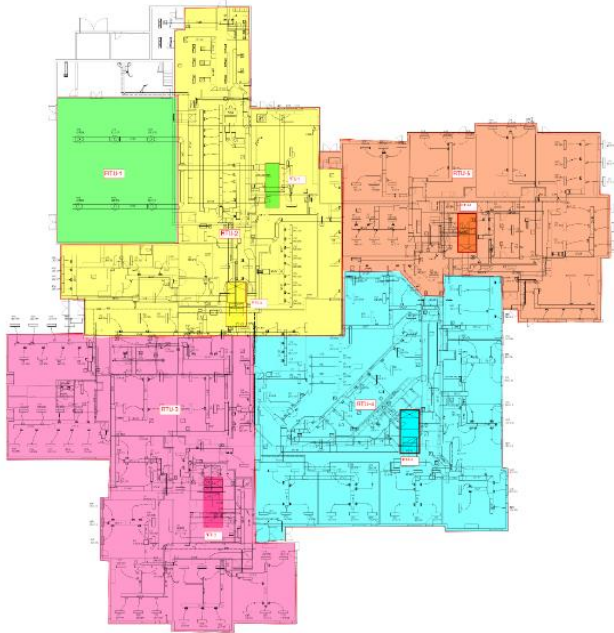


DW Mechanical 2023

Bradford South (RTU's, Controls),
Sobesky (Boilers, Pumps, Controls)

*West Woods ES scope & funding moved back to E&FFR summer 2024

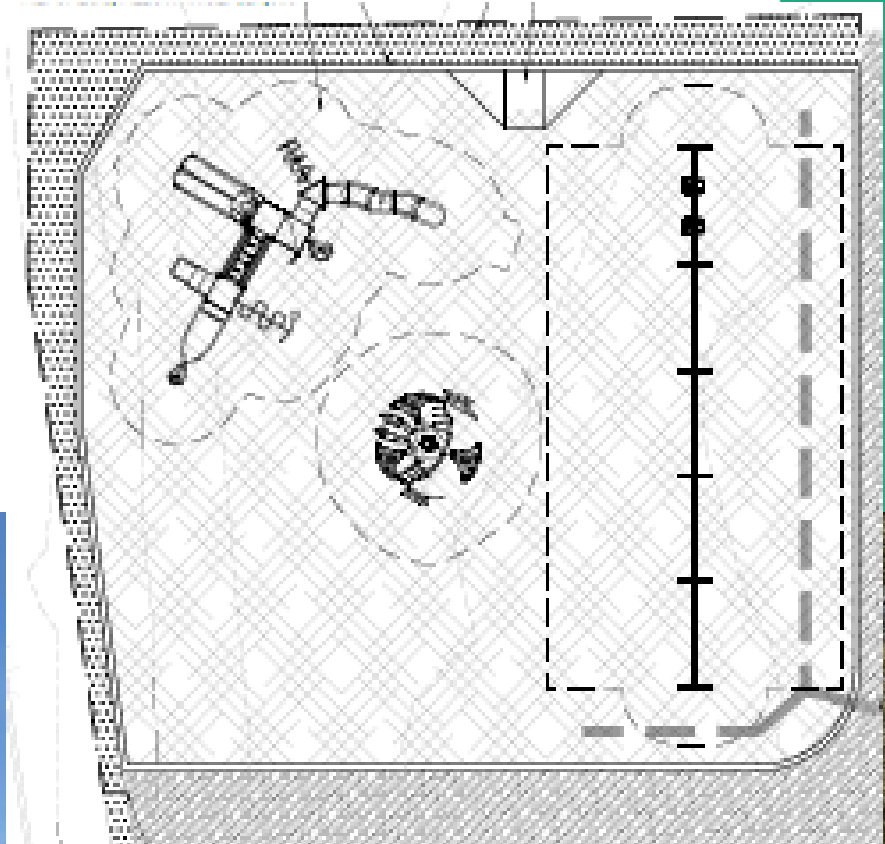
Columbine – CMGC Himmelman



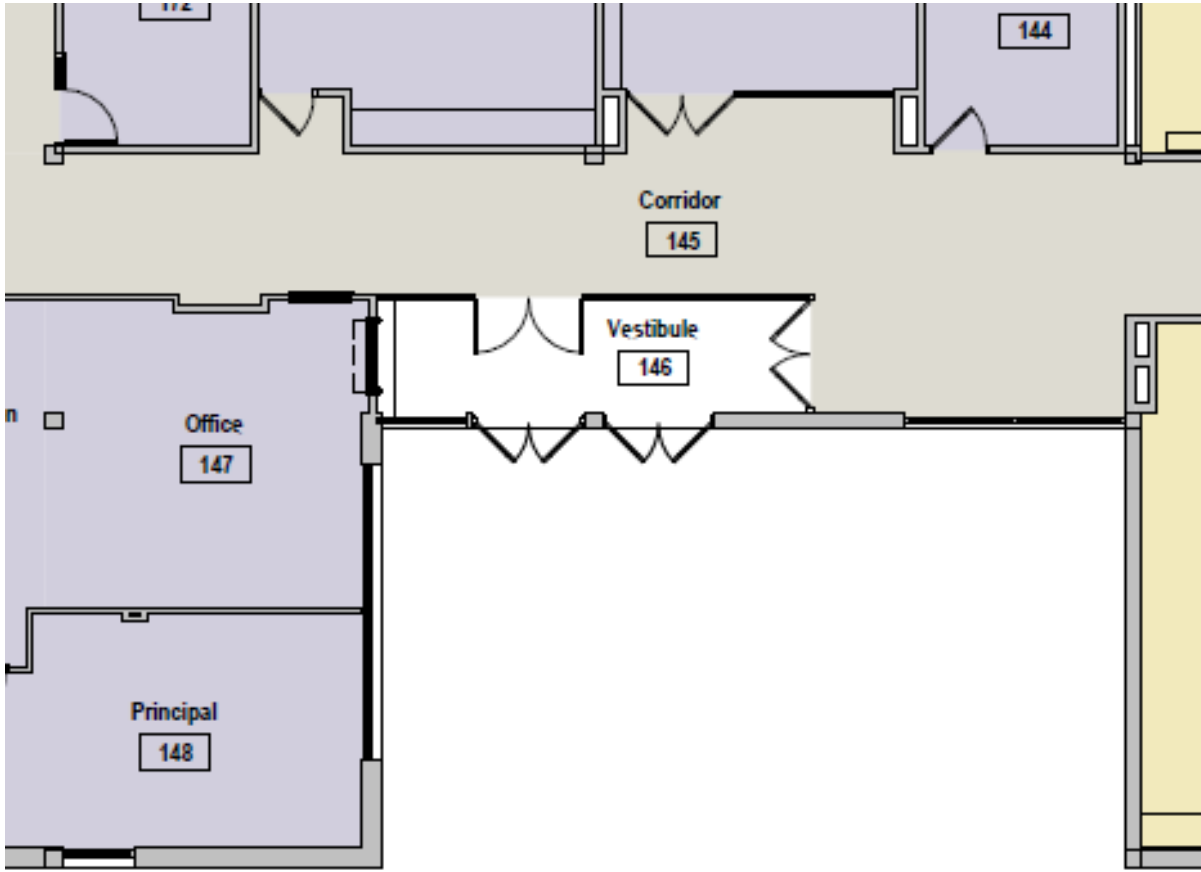
DW Playground 2023 Edgewater ES, Hutchinson ES

Construction

Design Concepts – Richdell



Swanson ES – Efficiency Future Ready H+M – O-A-K



Construction

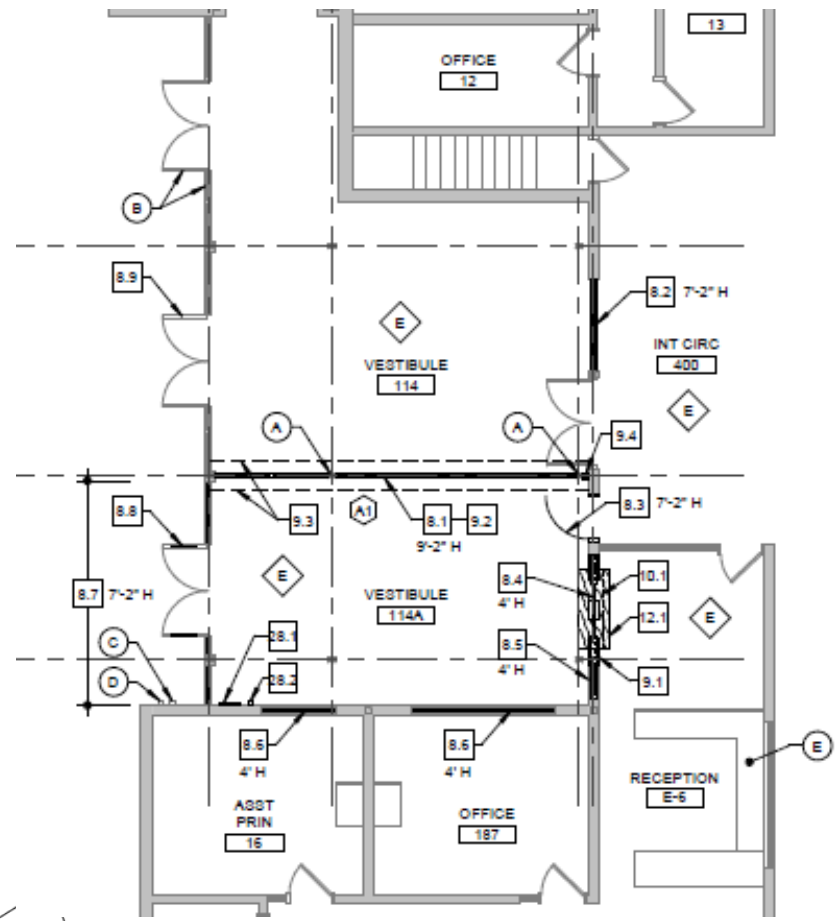
Bid 2/15/23
\$2,193,000

Budget
\$1,715,762

\$477,238
Over Budget

(High – LED, MECH,
Cabinetry Scope)

Oberon MS – Efficiency Future Ready Larson Incitti – TBD



Construction

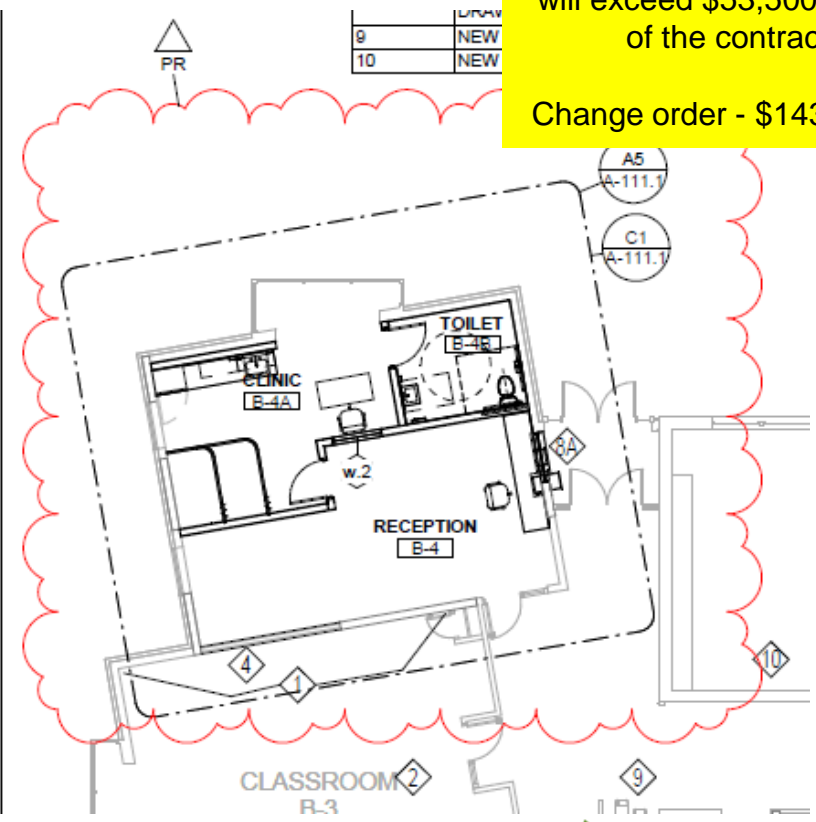
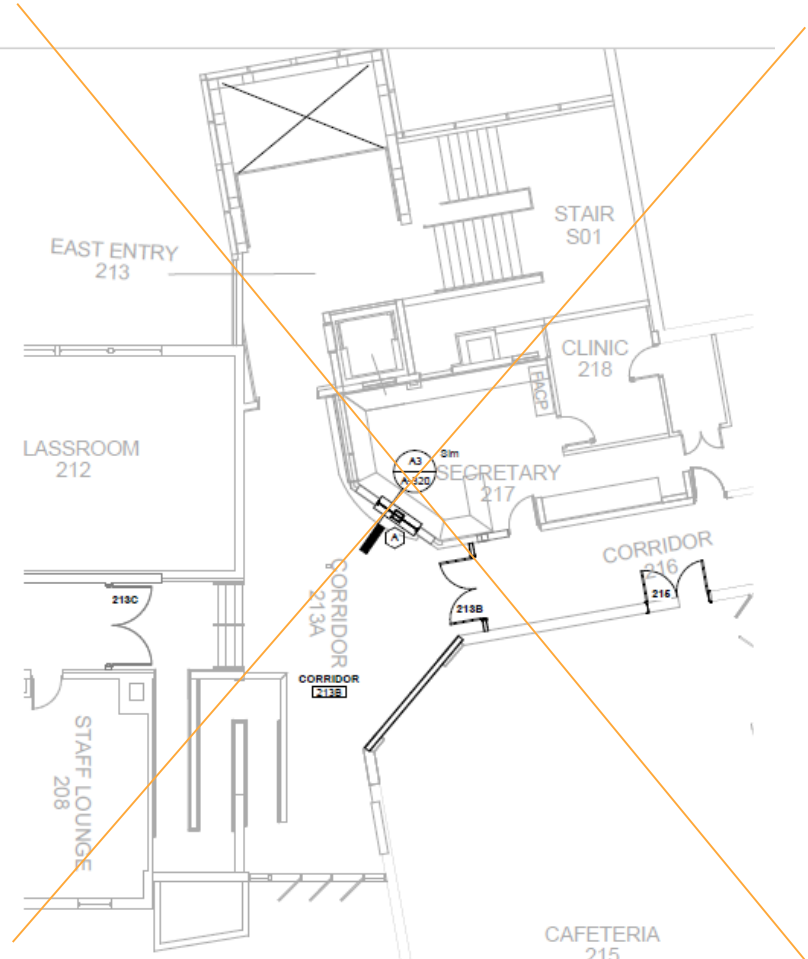
Bid 2/23/23
\$3,054,820

Budget
\$6,004,094

\$2,949,274
Under Budget

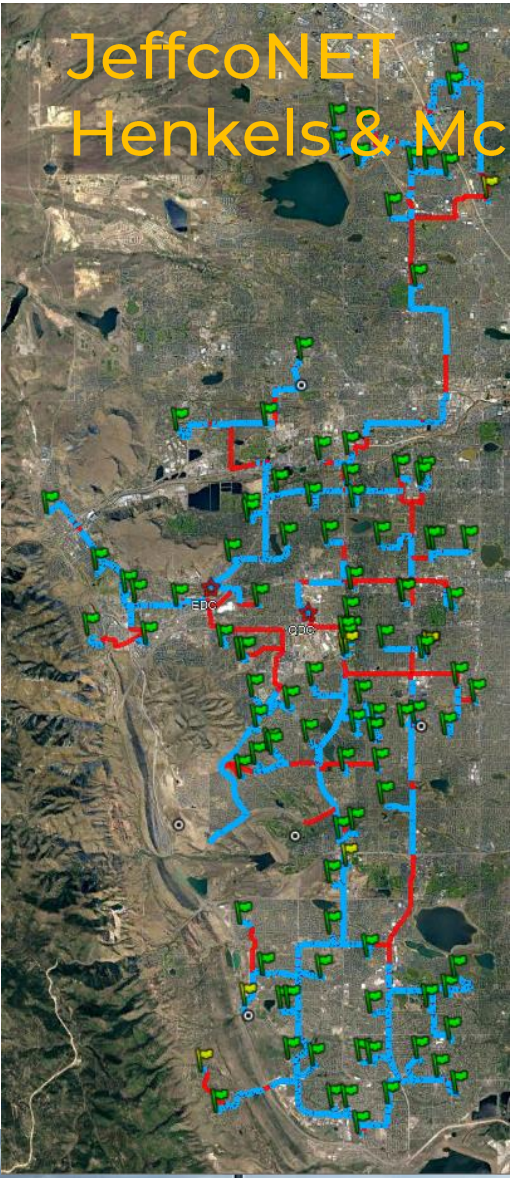
Edgewater ES – Efficiency Future Ready HCM – PG Arnold

Construction
Change order approval to BOE 3/9/23
 will exceed \$53,500 or 10% of the contract.
 Change order - \$143,693.98



Connections – Efficiency Future Ready Studiotrope – TBD





JeffcoNET Henkels & McCoy

Project Information

Project Start
April 29, 2020

Total Miles of conduit
to be bored 114

1,090 Permits to date
16 remaining

Miles Conduit installed
108 (95%)

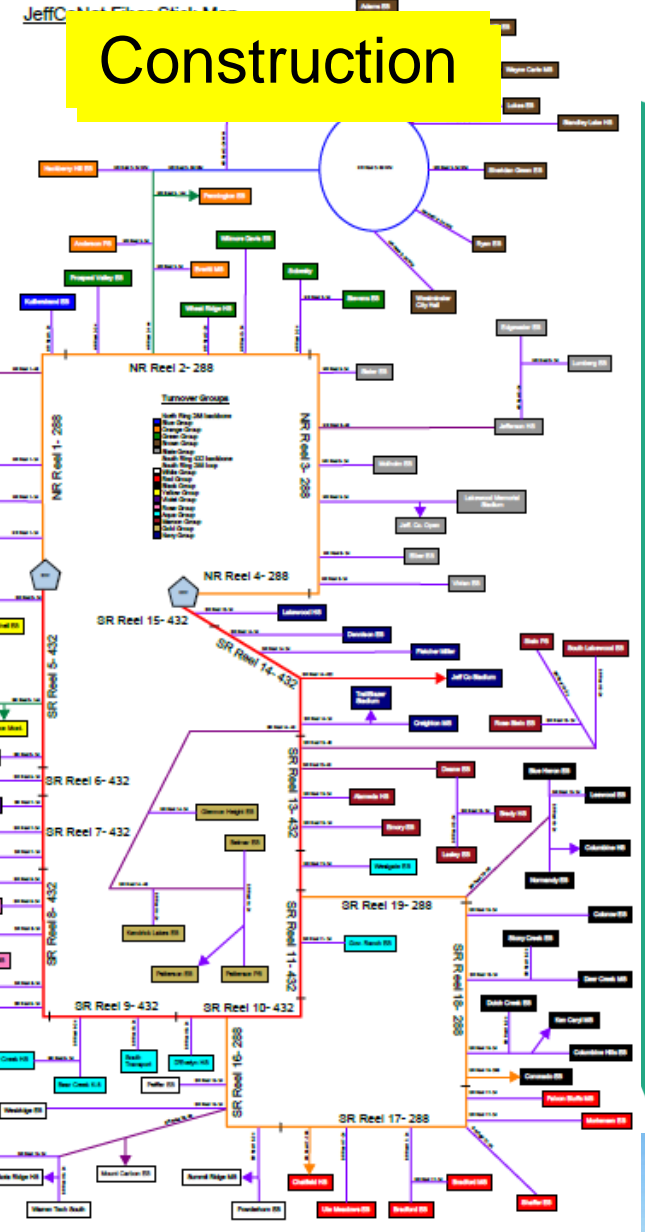
Miles Fiber installed
63 (37%)

North Backbone
Transitioning to
Jeffco Ownership

South Backbone turnover
Jul 2023

Legend for JeffcoNET Fiber Labels:

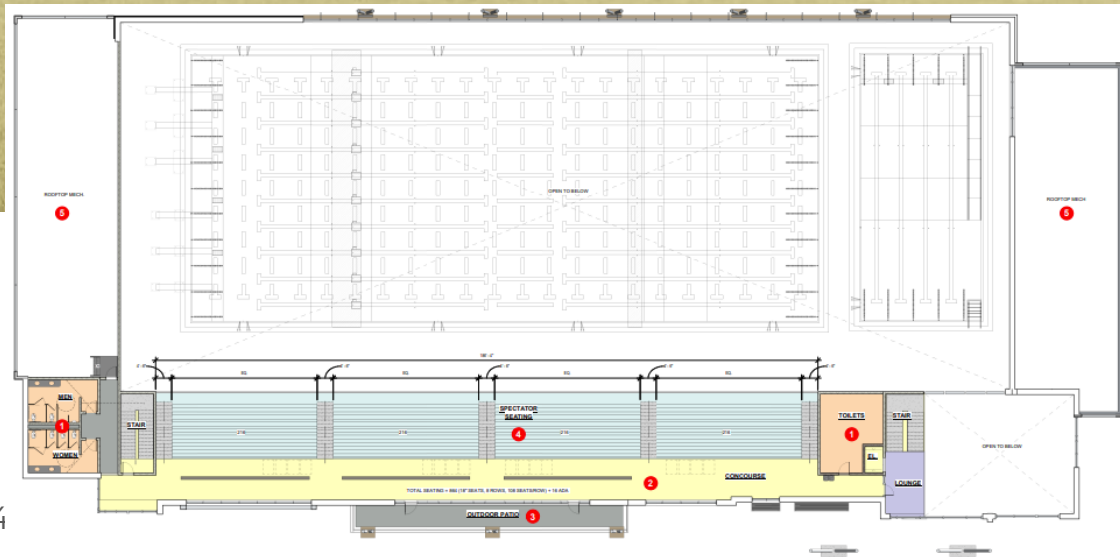
- Blue line: 24 Coax Fiber
- Purple line: 48 Coax Fiber
- Orange line: 96 Coax Fiber
- Red line: 144 Coax Fiber
- Green line: 288 Coax Fiber
- Yellow line: 432 Coax Fiber
- Light Blue line: Jeffco Network - 100 Coax
- Dark Blue line: Backbone Feed End



Meyers Pool

City of Arvada / Jeffco / Apex
OLC Designs – Saunders CMGC

GMP



Meyers Pool

City of Arvada / Jeffco / Apex

OLC Designs – Saunders CMGC



2024 Bond Projects

Location	Description	Construction Budget
West Lakewood	New School Morrison	\$ 22,402,800.00
Leyden Rock	New School Golden	\$ 21,336,000.00
Fairmount	Efficiency & Future Ready (Roofing, Flooring, Playground Complete) (HVAC Design Complete)	\$ 1,292,181.00
McLain High School	Efficiency & Future Ready	\$ 605,816.00
Rooney Ranch	Efficiency & Future Ready (Flooring, LED Complete)	\$ 141,623.00
Bradford North	Efficiency & Future Ready (Flooring , Paving, LED Complete)	\$ 226,594.00
Bradford South	Efficiency & Future Ready (Flooring, HVAC, LED Complete)	\$ 169,351.00
Leawood	Efficiency & Future Ready (Led Complete)	\$ 684,210.00
Normandy	Efficiency & Future Ready (Playground LED Complete)	\$ 1,044,213.00
Coal Creek K8	Efficiency & Future Ready	\$ 788,966.00
Moore MS	Late Summer Bid Efficiency & Future Ready	\$ 925,804.00
Warren Tech Central	Efficiency & Future Ready -	\$ 2,492,054.00
Meiklejohn	Efficiency & Future Ready (LED Complete)	\$ 200,705.00
West Woods	Efficiency & Future Ready (flooring LED Complete) HVAC design 99% complete)	\$ 2,672,666.00
Drake Middle	Efficiency & Future Ready	\$ 658,174.00
Free Horizon	Efficiency & Future Ready (Secure Entry Remains)	\$ 175,000.00

Plus FF&E Projects



2023 Policy Projects

Capital Investments for Thriving Schools - BOE Jun 08, 2022

Healthy & Equitable Start Times - BOE Mar 03, 2022

Regional Opportunities for Thriving Schools – BOE Nov 10, 2022

Program Verification & Feasibility Study – DLR Group

Fletcher Miller Special School

Study Complete
11/11/22

BOE Jun 08, 2022 - Special Meeting-Study/Dialogue Session
Capital Investments for Thriving Schools

Programming

Building Program Summary

Test fits will be based upon a 77,014 GSF program composed of small learning communities (suites of spaces including classrooms and other flexible learning spaces) for each cohort. This space program is based upon an enrollment of 100 students, with capacity to flex up to 115, if future staffing supports an increased enrollment. The spaces outlined for the future Fletcher Miller School are sized to accommodate adequate space for collaborative learning, specialized instruction, family and community connections, and specialized storage requirements. Additionally, to support the mobility requirements of this campus, spaces and grossing factors have been sized to either meet or exceed federally mandated American with Disabilities Act (ADA) required clearances.

Throughout each of the DAG meetings, the importance of indoor play space was discussed. These areas may be built into the presented program in a number of ways including within the dining/collaboration spaces within each of the learning communities. Therefore, it has not been included as additional square footage within the program.

PROGRAMMING

PROGRAM SUMMARY

Admin Area:	3,960 SF
Pre-K Learning:	4,925 SF
K-12 Learning:	13,590 SF
Lighthouse Learning:	5,070 SF
Jeffco Transition:	3,370 SF
Vocational:	1,600 SF
Library/Media:	3,300 SF
Food Service:	1,260 SF
Art/Music/P.E:	7,855 SF
Clinic:	1,190 SF
Therapeutic:	5,930 SF
Bldg. Support:	2,960 SF
TOTAL BUILDING AREA	77,014 SF

Reduced to
66,244
Square Feet



Program Verification & Feasibility Study – DLR Group

Fletcher Miller Special School

Study Complete
11/11/22

BOE Jun 08, 2022 - Special Meeting-Study/Dialogue Session
Capital Investments for Thriving Schools

Combination of reduced Square Footage and Cost/SF utilizing Jeffco Historical Cost/SF data:

Scenario 1 (NEW Build) Updated Construction Estimate: **\$28M - \$32M**

Scenario 2 (Addition) Updated Construction Estimate: **\$23M - \$27M**

Scenario 3 (Relocation) Updated Construction Estimate: **\$19M - \$25M**

March 1, 2023 Update to the Board of Education

School Closings & Consolidations

Resolution: Board of Education Decision on Staff

Recommendation Regional Opportunities for Thriving Schools

Thursday, November 10, 2022

Construction

GMP

\$6,886,094

Start 11/10/22

Prospect Valley ES (8CR Addition) MOA & Phipps CMGC

GH Phipps to remain the contractor for the new scope.

37 Week Design & Construction
Schedule



Effective July 1, 2023,
Kullerstrand Elementary
School will close and
combine its existing
attendance area with that
of Prospect Valley
Elementary School;

School Closings & Consolidations

Resolution: Board of Education Decision on Staff
Recommendation Regional Opportunities for Thriving Schools
Thursday, November 10, 2022

37 Week Design & Construction Schedule

Stober ES

(5CR Addition + Kitchen) LOA & CMGC GTC

Construction

IGMP

\$5,422,602

Start 3/20/23



Effective July 1, 2023, New Classical Academy at Vivian will close and combine its existing attendance area with that of Stober Elementary School;

School Closings & Consolidations

Resolution: Board of Education Decision on Staff
 Recommendation Regional Opportunities for Thriving Schools
 Thursday, November 10, 2022

Construction

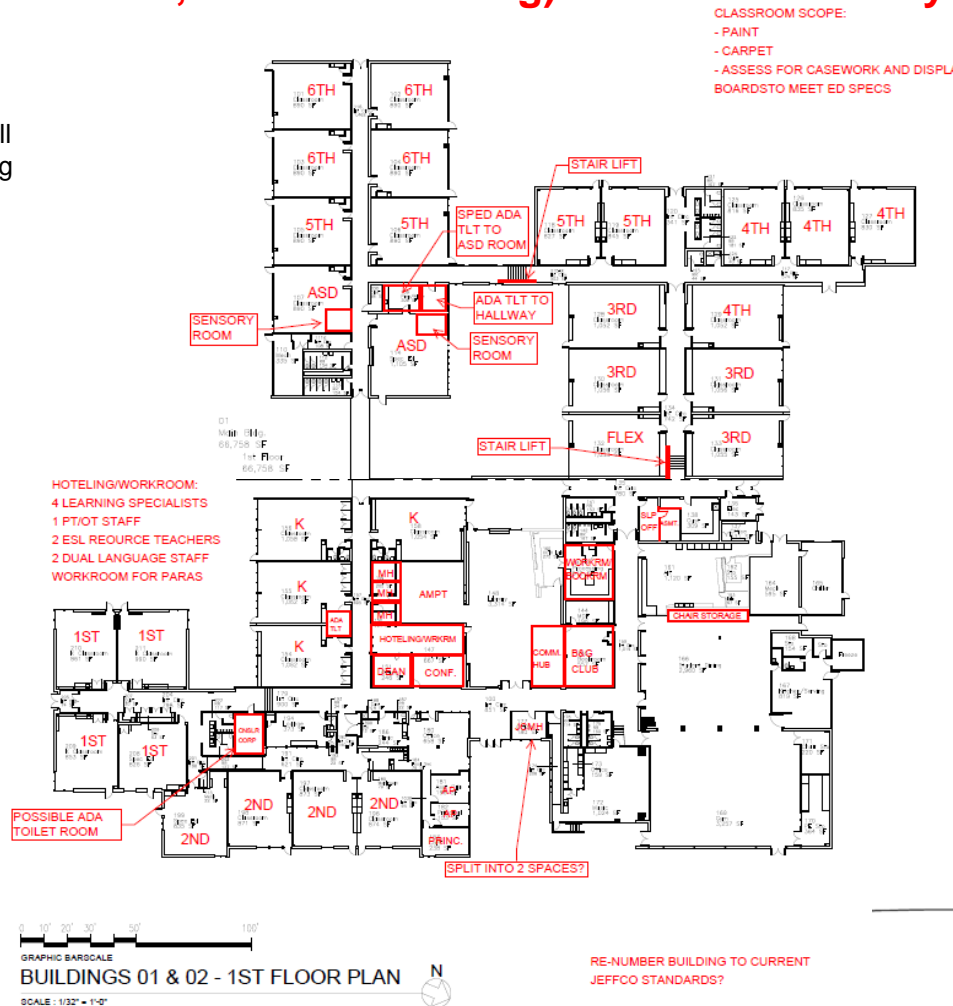
GMP
 \$2,268,824

Lasley ES

9 Week Construction Schedule

(ADA Lifts / Toilet Rooms, Admin & Parking) H&M & CMGC Bryan

A. Effective July 1, 2023,
 Emory Elementary School will
 close and combine its existing
 attendance area with that of
 Lasley Elementary School;



School Closings & Consolidations

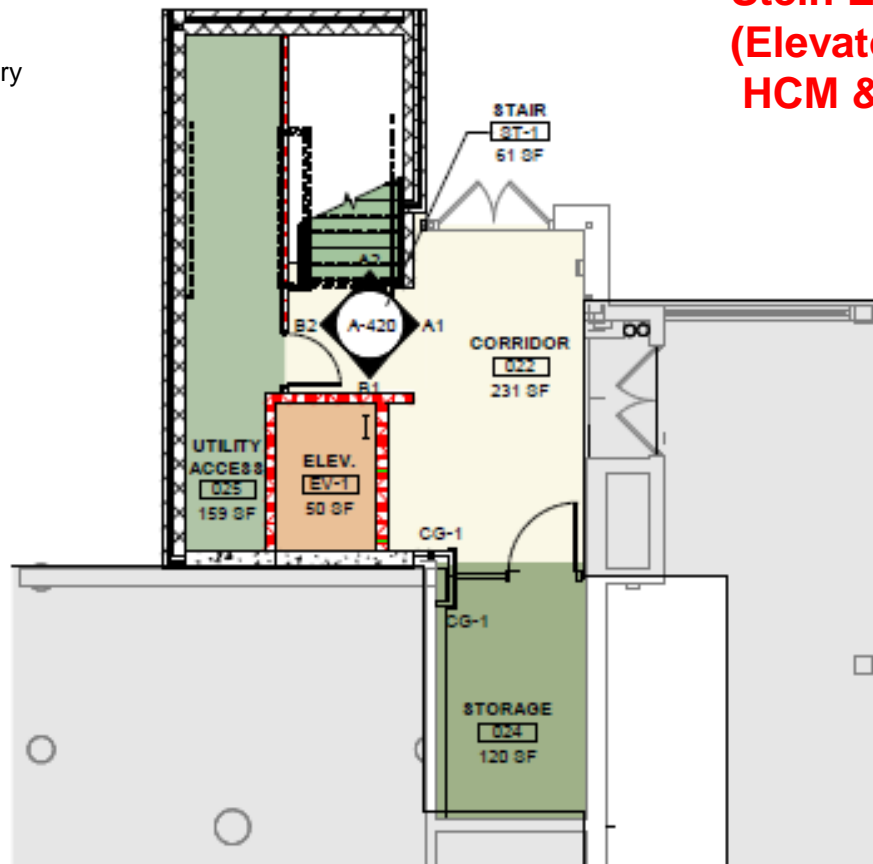
Resolution: Board of Education Decision on Staff
Recommendation Regional Opportunities for Thriving Schools
Thursday, November 10, 2022

Construction

GMP
\$1,713,656

Alameda: Emory → Lasley (Emory
Center Program → Rose Stein)

37 Week Design & Construction
Schedule



Stein ES
(Elevator/Stair Addition)
HCM & CMGC Himmelman

School Closings & Consolidations

Resolution: Board of Education Decision on Staff

Recommendation Regional Opportunities for Thriving Schools

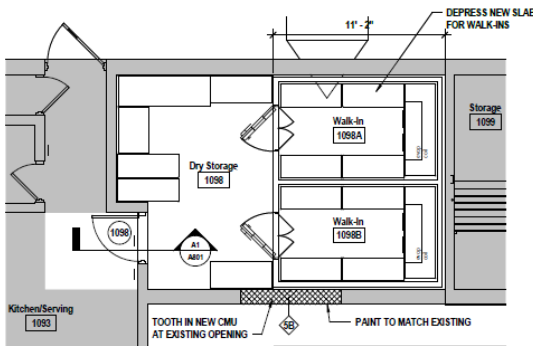
Thursday, November 10, 2022

Receiving Schools Upgrades & Kitchen Improvements

Kitchen Improvements

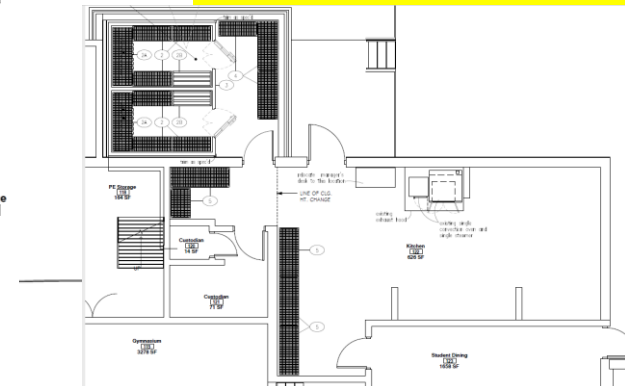
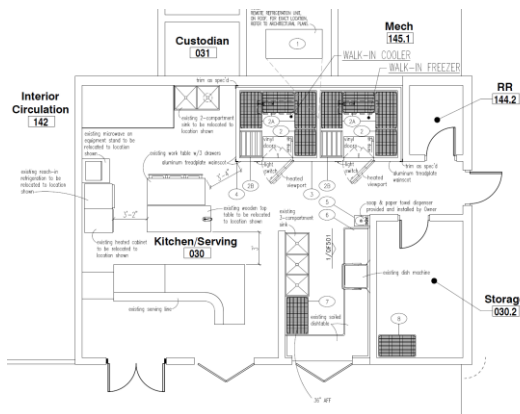
Kendallvue ES
H&M GC GTC

Bid w/ E&FR



Fremont ES
(Wilmore Davis Re-design)

Lukas ES
Eidos - CMGC Mark Young



Construction

Kendallvue
Bid

\$187,200

Fremont
GMP

\$304,571

Lukas
GMP

\$936,665

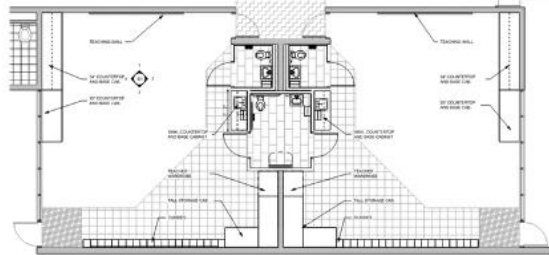
School Closings & Consolidations

Resolution: Board of Education Decision on Staff Recommendation Regional Opportunities for Thriving Schools
Thursday, November 10, 2022

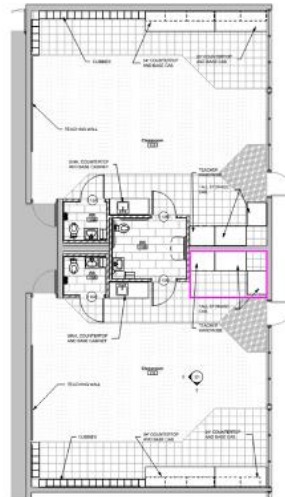
GMP 3/3/23
\$2,544,430

GMP 3/15/23
\$2,359,410

Campbell (ELC) Eidos & Palace CMGC



Typical Classroom - Area A
1/4" = 1'-0"



Typical Classroom - Area C
1/4" = 1'-0"



Identify preschool options based on an articulated strategy for district-wide preschool as part of students' PK-12 educational experience;

9 Week Construction Schedule

~~3/9/23 BOE Agenda~~
4/12/23 BOE Agenda



School Closings & Consolidations

Resolution: Board of Education Decision on Staff
Recommendation Regional Opportunities for Thriving Schools
Thursday, November 10, 2022

IGMP 3/3/23
\$5,342,148

DW – Receiving Schools Upgrades Bundle #1 A/E RB+B – CMGC HPM

**Foothills, Vanderhoof, Green Gables, Hutchinson, Maple Grove,
Powderhorn, Ryan, Secrest, Semper, Slater, Slater Back on 2/6,
Fremont, Wheat Ridge, Standley Lake, Adams, Meiklejohn**

9 Week Construction Schedule

Identify preschool options
based on an articulated
strategy for district-wide
preschool as part of
students' PK-12
educational experience;



3/9/23 BOE Agenda
4/12/23 BOE Agenda

School Closings & Consolidations

Resolution: Board of Education Decision on Staff
Recommendation Regional Opportunities for Thriving Schools
Thursday, November 10, 2022

9 Week Construction Schedule

DW – Receiving Schools Upgrades Bundle #2
A/E MOA – CMGC Saunders

Sierra, Weber

Identify preschool options
based on an articulated
strategy for district-wide
preschool as part of
students' PK-12
educational experience;

Estimate

Weber
\$975,536

Sierra
\$792,422



4/12/23 BOE Agenda

Healthy & Equitable Start Times

Start Times Next Steps

BOE Mar 03 2022

IGMP 2/1/23
\$6,556,613

GMP 3/22/23

High School Athletic Field Lighting

Phase I - Fall 2023 (with NTP 2/9)

Engineer Ackerman – CMGC Himmelman

Address challenges related to athletics and activities.

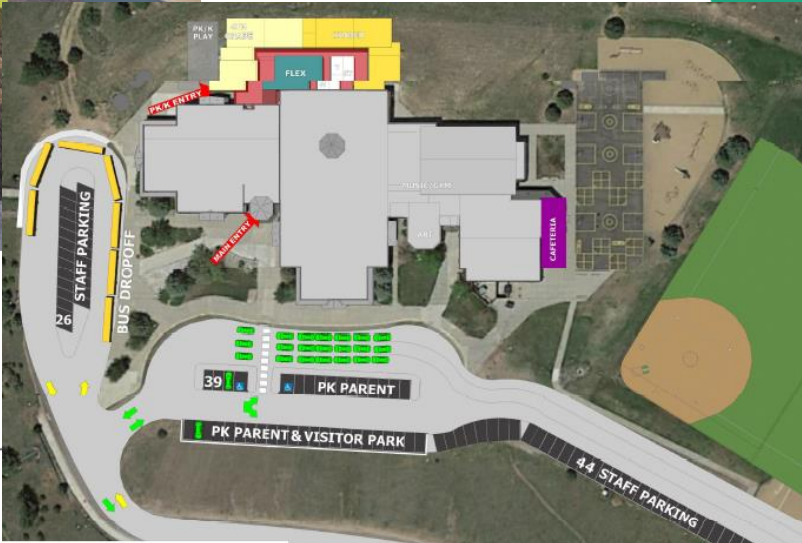


Alameda International High School
Arvada High School
Arvada West High School
Bear Creek High School
Chatfield High School
Columbine High School
Dakota Ridge Senior High School
D'Evelyn Junior/Senior High School
Golden High School
Green Mountain High School
Jefferson High School
Lakewood High School
Pomona High School
Ralston Valley Senior High School
Standley Lake High School
Wheat Ridge High School

School Closings & Consolidations

Resolution: Board of Education Decision on Staff
Recommendation Regional Opportunities for Thriving Schools
Thursday, November 10, 2022

Bergen Valley ES - EUA & GC TBD



Effective July 1, 2024, Bergen Meadow K-2 will close and the grade configuration of Bergen Valley will be converted to a PK-5.

2023 Miscellaneous Projects

DW FA Upgrades (Voice Evac) D'Evelyn & Pomona TLH Fire – Weifield Group



Bid 12/13/22
\$1,178,353

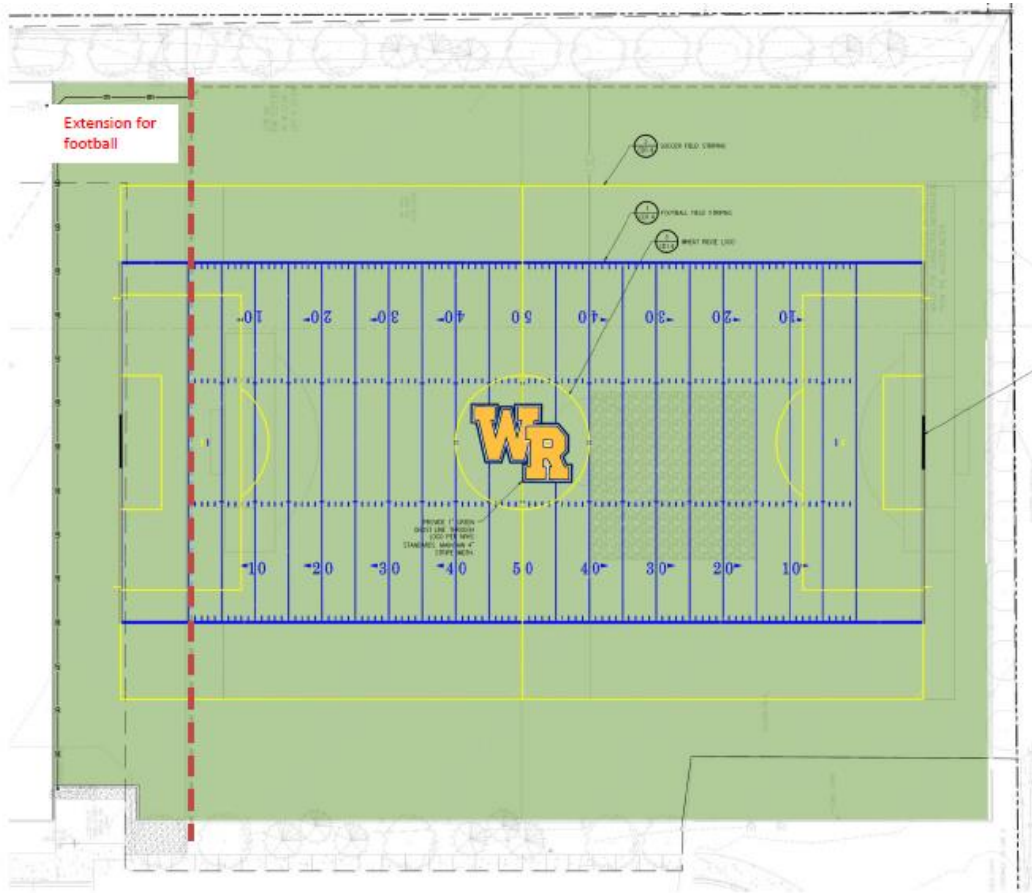
Estimate
\$1,721,000

Below
Estimate
\$542,647

Project
Cancelled



Turf Field Replacement Wheat Ridge HS Eidos – GTC



Construction

Change order approval to BOE 3/9/23

will exceed \$68,817 or 10% of the contract.

Change order - \$393,062 larger play surface

DW Mechanical 2023 South Lakewood (1 RTU)

Columbine – CMGC Himmelman



Construction

GMP
\$1,082,796

Estimate
\$800,000

\$282,796
over estimate

Ackerman – GC TBD

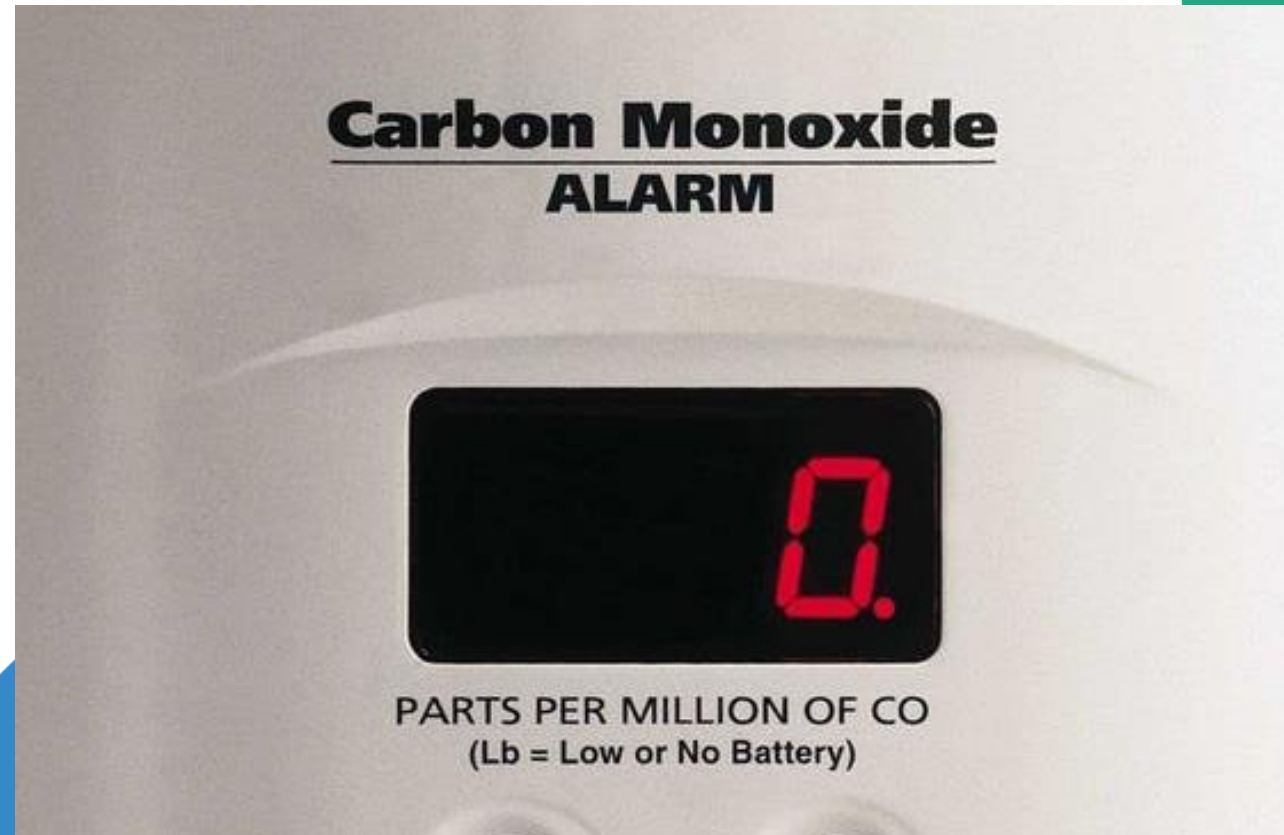
- Replace Direct Burial electrical lines at the 6th & Kipling Stadium Lighting
- Replace the existing Mercury Vapor lights at Trailblazer Stadium with LED
- Replace parking lot lighting with LED and add exterior security cameras at the Ed Center



7 Schools – Required by South Metro Fire District

Coronado, Blue Heron, Leawood, Normandy,
Dutch Creek, Stony Creek, Columbine Hills

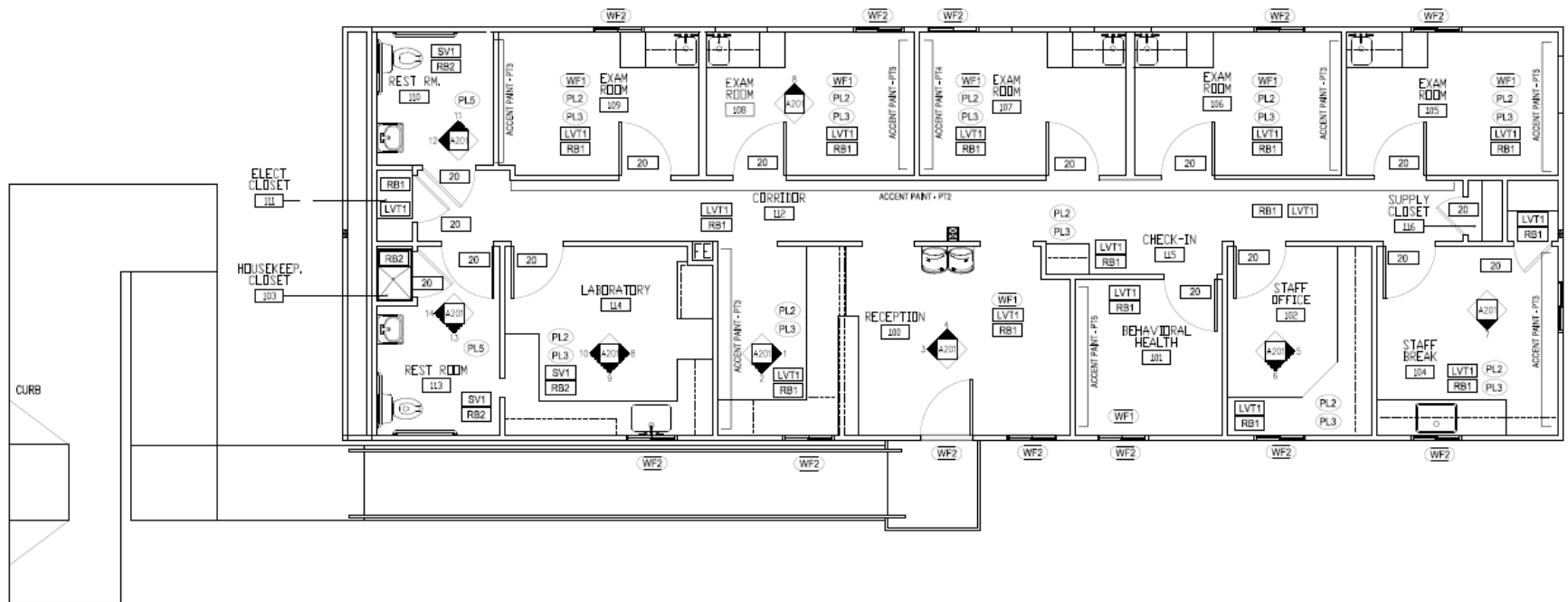
TLH Fire – TBD



Stride Clinic @ Alameda International Jr/Sr High

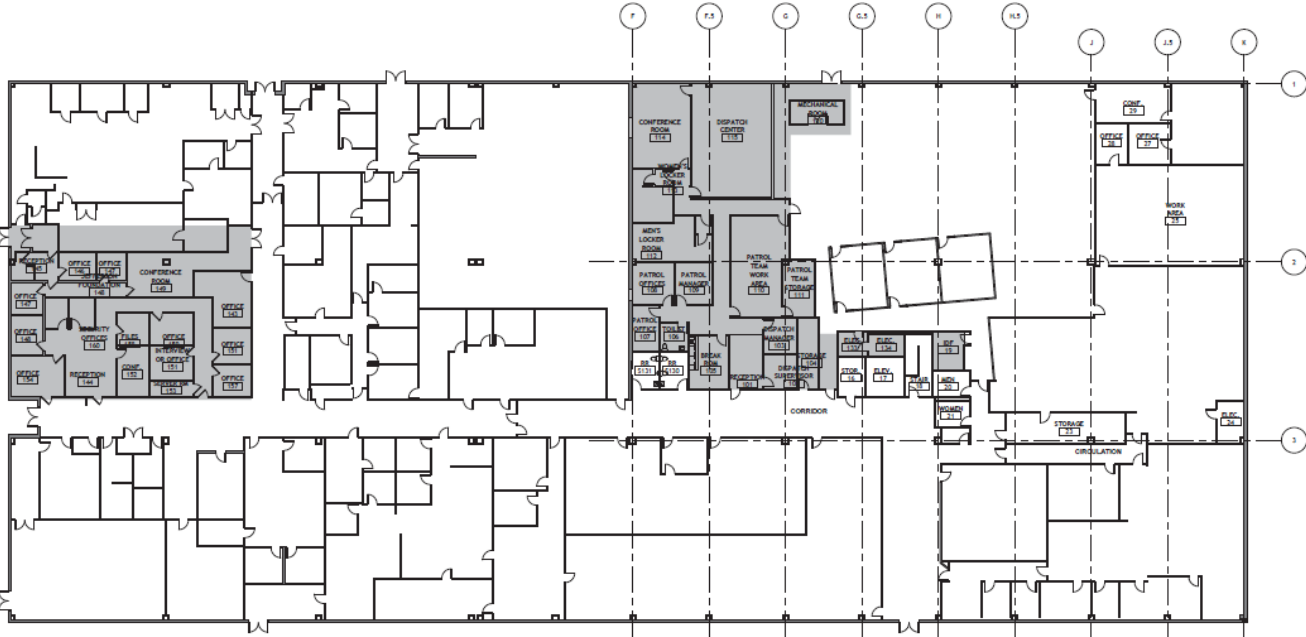
Jordin – TBD

CD



Security Office Renovation 809 Quail – Building 1

HCM – CMGC WE O’Neal



WW Wheeler – GC TBD



Next Meeting 4/20/23